

Signify Classified - Internal  
Cooper Lighting Solutions Photometric Lab  
1121 Highway 74 South  
Peachtree City, GA 30269



Scaled data based on original data using  
LM-79-08 Approved Method: Electrical and Photometric Measurements of Solid-  
State Lighting Products

Test Report Prepared for  
Cooper Lighting Solutions  
(formerly Eaton)

Brand: McGRAW-EDISON

Report Number: P324264

Luminaire Tested: **GLEON-SA0D-760-U-SLL-HSS**

Issue Date: 3/3/2020

**Test Information**

Test Method: LM-79-08  
Report Number: P324264  
TEST IS SCALED FROM IESNA LM-79-08 TEST DATA (G2-1903-205-27)  
Test Lab: INNOVATION CENTER  
Issue Date: 3/3/2020  
Manufacturer: COOPER LIGHTING SOLUTIONS (FORMERLY EATON)  
Product Line: McGRAW-EDISON  
Catalog Number: GLEON-SA0D-760-U-SLL-HSS  
Description: GALLEON AREA AND ROADWAY LUMINAIRE  
(10) 70 CRI, 5700K, 1200mA LIGHTSQUARES WITH 16 LEDS EACH AND SPILL LIGHT  
ELIMINATOR LEFT OPTICS WITH HOUSE SIDE SHIELD  
Light Source: -  
Ballast/Driver: ELECTRONIC DRIVER

**Summary**

Lumens per Lamp: N/A  
Luminaire Lumens: 56934 lumens  
Efficiency: N/A  
Efficacy: 89.0 lumens/watt  
Luminous Opening: Rectangular (W 2.5' x L: 1' x H: 0')  
IES Classification: Type III - Medium  
BUG Rating: B3 - U0 - G5

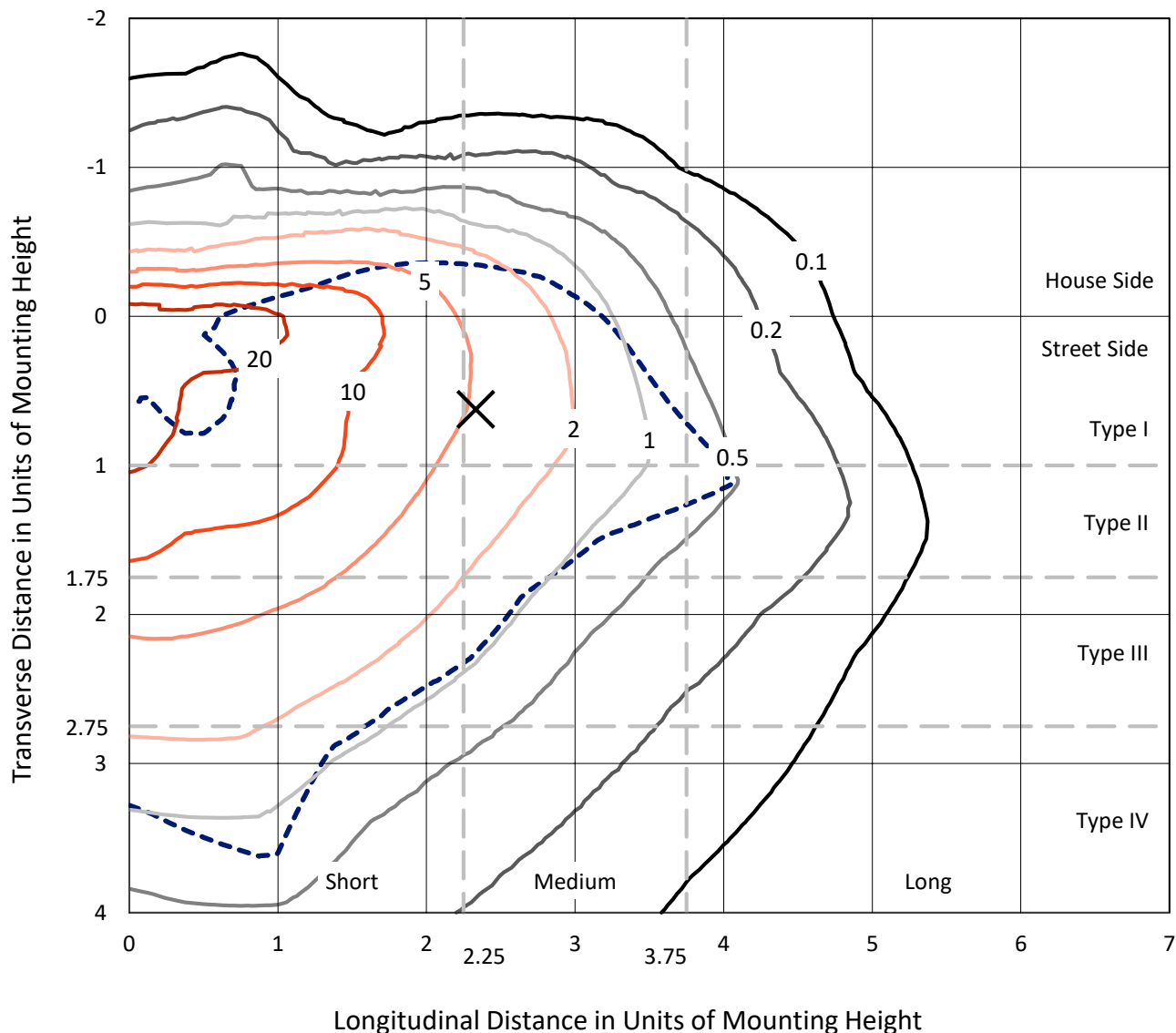
Input Watts (W): 640  
Input Voltage (V): NR  
Input Current (Ain): NR  
Voltage Rise (V): NR  
Power Factor: NR  
Total Harmonic Distortion (THDi): NR  
Frequency (hertz): 60  
Stabilization Time: NR  
Operation Time: NR  
Ambient Temperature (°C): NR  
Test Distance: 24 FT



REPORT NUMBER: P324264  
 CATALOG NUMBER: GLEON-SA0D-760-U-SLL-HSS

### Iso-Footcandle Lines of Horizontal Illumination

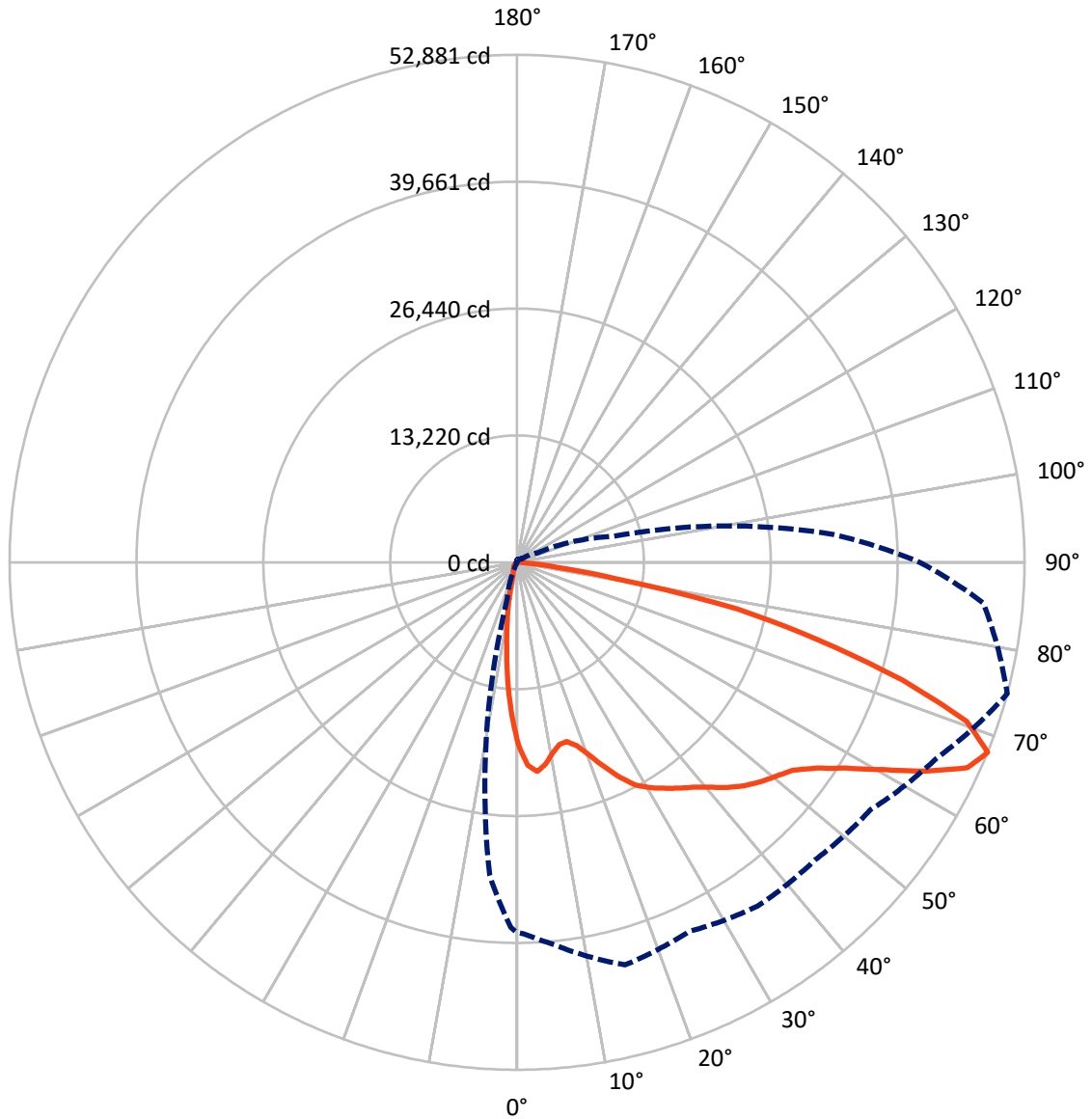
✕ Max cd  
 - - - 1/2 Max cd



Based on 25 foot mounting height. Maximum calculated value = 39.6 fc  
 Type III - Medium - N/A

REPORT NUMBER: P324264  
CATALOG NUMBER: GLEON-SA0D-760-U-SLL-HSS

### Luminous Intensity Polar Plot



— Vertical Plane Through 75-Deg Lateral      - - - Horizontal Cone Through 67.5-Deg Vertical

REPORT NUMBER: P324264  
 CATALOG NUMBER: GLEON-SA0D-760-U-SLL-HSS

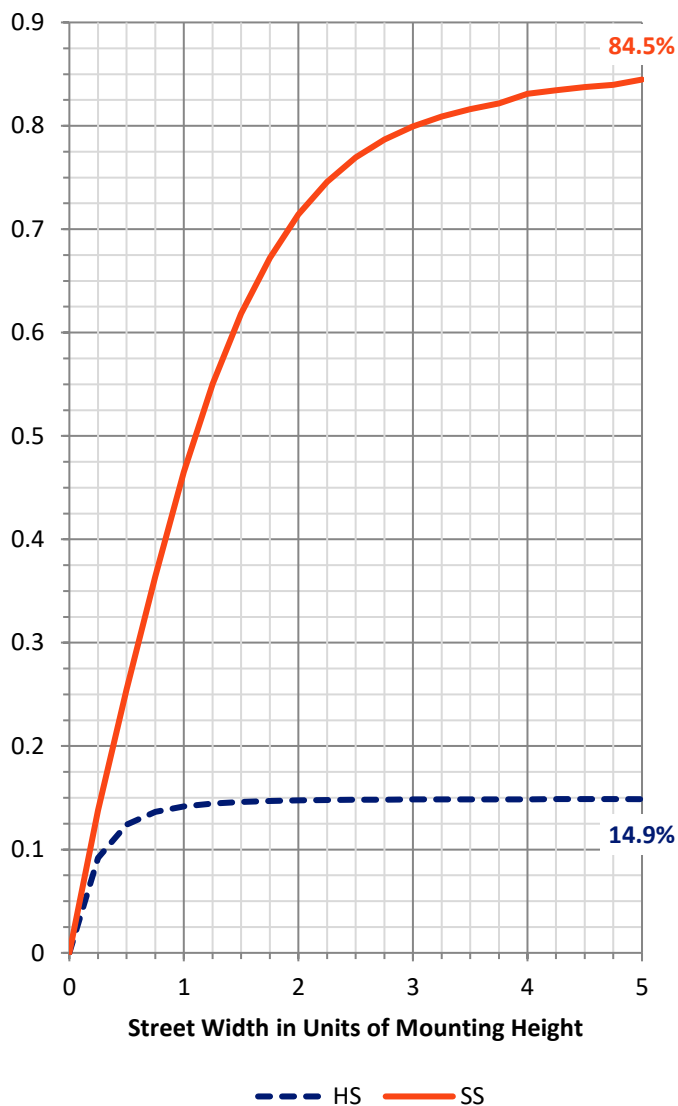
**FLUX DISTRIBUTION:**

|                    |           | Downward | Upward | Total   |
|--------------------|-----------|----------|--------|---------|
| <b>House Side</b>  | Lumens    | 8543.5   | 0.0    | 8543.5  |
|                    | % Fixture | 15.0     | 0.0    | 15.0    |
| <b>Street Side</b> | Lumens    | 48390.5  | 0.0    | 48390.5 |
|                    | % Fixture | 85.0     | 0.0    | 85.0    |
| <b>Total</b>       | Lumens    | 56934.0  | 0.0    | 56934.0 |
|                    | % Fixture | 100.0    | 0.0    | 100.0   |

**ZONAL LUMENS:**

| Zone      | Lumens  | % Fixture |
|-----------|---------|-----------|
| 0°-10°    | 1448.9  | 2.5       |
| 10°-20°   | 2852.8  | 5.0       |
| 20°-30°   | 4035.9  | 7.1       |
| 30°-40°   | 5933.9  | 10.4      |
| 40°-50°   | 8529.0  | 15.0      |
| 50°-60°   | 12006.6 | 21.1      |
| 60°-70°   | 14022.6 | 24.6      |
| 70°-80°   | 7153.9  | 12.6      |
| 80°-90°   | 950.3   | 1.7       |
| 90°-100°  | 0.0     | 0.0       |
| 100°-110° | 0.0     | 0.0       |
| 110°-120° | 0.0     | 0.0       |
| 120°-130° | 0.0     | 0.0       |
| 130°-140° | 0.0     | 0.0       |
| 140°-150° | 0.0     | 0.0       |
| 150°-160° | 0.0     | 0.0       |
| 160°-170° | 0.0     | 0.0       |
| 170°-180° | 0.0     | 0.0       |
| 0°-90°    | 56934.0 | 100.0     |
| 0°-180°   | 56934.0 | 100.0     |

**Coefficient of Utilization**

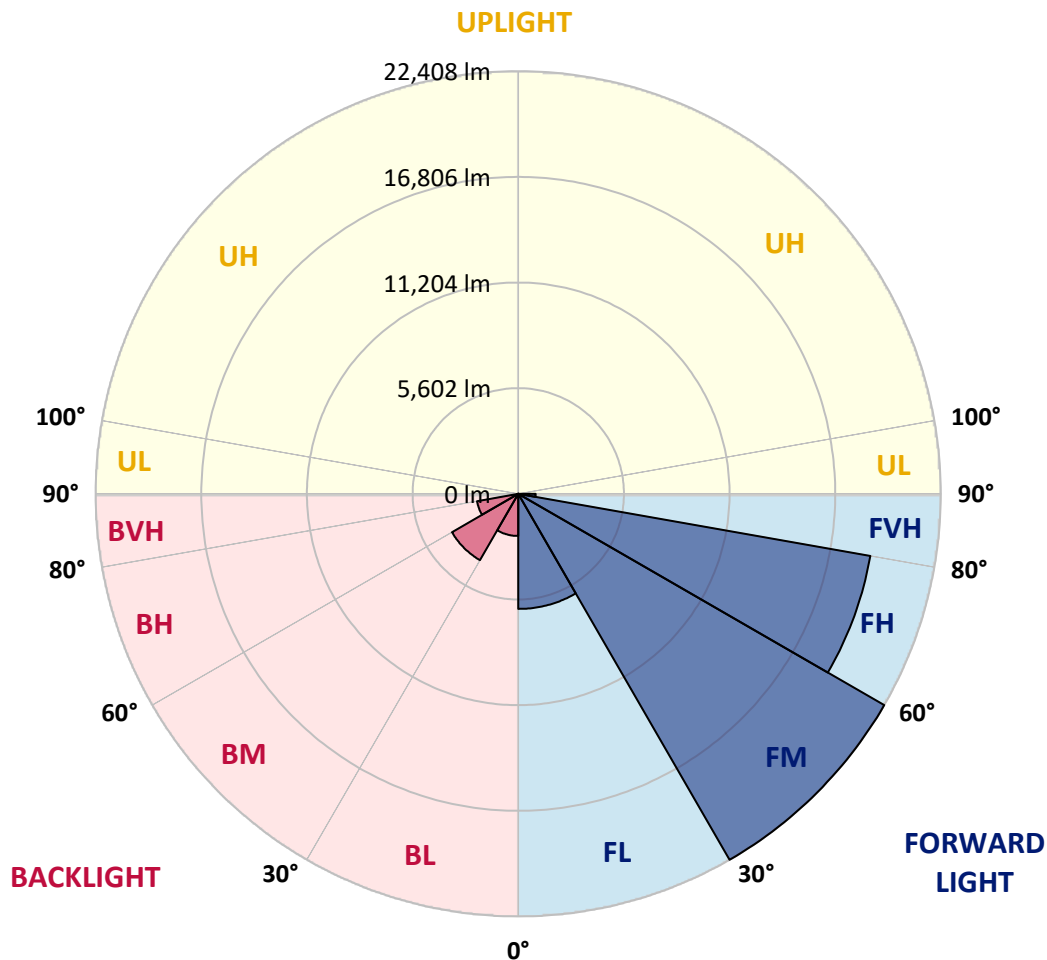


REPORT NUMBER: P324264  
 CATALOG NUMBER: GLEON-SA0D-760-U-SLL-HSS

**LUMINAIRE CLASSIFICATION SYSTEM LUMEN TABLE AND BUG RATING:**

| Zone           | Lumens  | % Fixture | Zone Rating/Lumen Limit |      |         |
|----------------|---------|-----------|-------------------------|------|---------|
|                |         |           | B                       | U    | G       |
| FL (0°-30°)    | 6103.3  | 10.7      |                         |      |         |
| FM (30°-60°)   | 22408.2 | 39.4      |                         |      |         |
| FH (60°-80°)   | 18957.4 | 33.3      |                         |      | G5      |
| FVH (80°-90°)  | 921.5   | 1.6       |                         |      | G5      |
| BL (0°-30°)    | 2234.2  | 3.9       | B3/2500                 |      |         |
| BM (30°-60°)   | 4061.3  | 7.1       | B3/5000                 |      |         |
| BH (60°-80°)   | 2219.1  | 3.9       | B3/2500                 |      | G3/2500 |
| BVH (80°-90°)  | 28.8    | 0.1       |                         |      | G1/100  |
| UL (90°-100°)  | 0.0     | 0.0       |                         | U0/0 |         |
| UH (100°-180°) | 0.0     | 0.0       |                         | U0/0 |         |

**BUG Rating: B3-U0-G5**  
 Type III Medium





REPORT NUMBER: P324264

CATALOG NUMBER: GLEON-SA0D-760-U-SLL-HSS

**CANDELA DISTRIBUTION (FULL):**

|       | 0°      | 1°      | 5°      | 15°     | 25°     | 35°     | 45°     | 55°     | 65°     | 75°     | 85°     |
|-------|---------|---------|---------|---------|---------|---------|---------|---------|---------|---------|---------|
| 0°    | 19100.4 | 19100.4 | 19100.4 | 19100.4 | 19100.4 | 19100.4 | 19100.4 | 19100.4 | 19100.4 | 19100.4 | 19100.4 |
| 2.5°  | 20705.1 | 20737.5 | 20904.7 | 21293.1 | 21716.5 | 21748.9 | 22034.8 | 21740.8 | 21641.0 | 21166.3 | 20675.5 |
| 5°    | 20861.5 | 20985.6 | 21560.1 | 22700.9 | 23690.7 | 24009.0 | 24235.5 | 23658.4 | 23051.5 | 21891.8 | 20653.9 |
| 7.5°  | 19602.0 | 19809.7 | 20713.2 | 22854.7 | 24623.9 | 25406.0 | 25554.4 | 24650.9 | 23164.8 | 21255.3 | 19394.4 |
| 10°   | 17989.2 | 18226.5 | 19316.1 | 21948.4 | 24378.5 | 25718.9 | 25923.9 | 24739.9 | 22603.8 | 20225.0 | 18032.4 |
| 12.5° | 16683.8 | 16961.6 | 18075.5 | 20929.0 | 23534.3 | 25017.7 | 25422.2 | 24440.5 | 22118.4 | 19494.2 | 17101.9 |
| 15°   | 16082.4 | 16400.7 | 17571.2 | 20270.9 | 22598.4 | 23766.2 | 24100.7 | 23677.2 | 21848.7 | 19378.2 | 16886.1 |
| 17.5° | 16427.6 | 16772.8 | 17981.1 | 20327.5 | 21719.2 | 22218.2 | 22487.9 | 22660.5 | 21848.7 | 20076.7 | 17517.2 |
| 20°   | 17843.6 | 18215.8 | 19494.2 | 20902.0 | 20991.0 | 20804.9 | 21093.5 | 21700.3 | 22102.2 | 21403.6 | 19033.0 |
| 22.5° | 19801.6 | 20238.5 | 21681.4 | 21886.4 | 20635.0 | 19931.1 | 19968.8 | 20920.9 | 22563.4 | 23086.6 | 21136.6 |
| 25°   | 22188.5 | 22722.5 | 24189.7 | 23353.6 | 20783.3 | 19410.5 | 19397.1 | 20279.0 | 23013.8 | 24772.2 | 23480.4 |
| 27.5° | 24559.2 | 25147.1 | 26436.3 | 25144.4 | 21395.6 | 19316.1 | 19289.2 | 20084.8 | 23453.4 | 26271.8 | 26039.8 |
| 30°   | 26546.9 | 27118.7 | 28229.8 | 26441.7 | 22056.3 | 19537.3 | 19407.8 | 20292.5 | 23715.0 | 27245.4 | 27906.2 |
| 32.5° | 28165.1 | 28623.6 | 29521.7 | 27334.4 | 22763.0 | 19966.1 | 19685.6 | 20848.1 | 24160.0 | 28068.0 | 29621.5 |
| 35°   | 29945.2 | 30427.9 | 30786.6 | 28184.0 | 23555.9 | 20583.8 | 20181.9 | 21730.0 | 24845.1 | 28904.1 | 31501.3 |
| 37.5° | 31976.0 | 32456.1 | 32412.9 | 28960.7 | 24561.9 | 21605.9 | 21349.7 | 23127.1 | 25910.4 | 29732.1 | 33599.6 |
| 40°   | 33963.7 | 34454.6 | 34104.0 | 29810.3 | 25743.2 | 23291.6 | 23102.8 | 25225.3 | 27337.1 | 30792.0 | 36059.3 |
| 42.5° | 35824.7 | 36356.0 | 35606.2 | 30614.0 | 27151.0 | 25416.8 | 25740.5 | 27927.8 | 29122.6 | 32097.4 | 38179.2 |
| 45°   | 37324.2 | 37866.3 | 36865.7 | 31396.2 | 28634.4 | 27995.2 | 28968.8 | 30921.5 | 31269.4 | 33200.5 | 39611.3 |
| 47.5° | 38413.8 | 38926.3 | 37739.6 | 32178.3 | 30533.1 | 31148.0 | 32844.5 | 34060.8 | 33208.6 | 34157.9 | 40628.1 |
| 50°   | 39109.7 | 39508.8 | 37995.8 | 33157.3 | 33025.2 | 34826.8 | 36881.9 | 37475.3 | 35034.5 | 35021.0 | 41863.3 |
| 52.5° | 39552.0 | 39732.7 | 38184.6 | 34179.5 | 35625.1 | 38831.9 | 40835.8 | 41021.9 | 36914.3 | 35970.3 | 43527.4 |
| 55°   | 41075.8 | 41221.4 | 39522.3 | 35417.4 | 37774.6 | 42340.7 | 44412.0 | 44239.4 | 39042.2 | 37828.6 | 45490.8 |
| 57.5° | 43675.7 | 43829.5 | 42286.8 | 37197.5 | 39514.2 | 44509.1 | 47003.9 | 47314.0 | 41537.0 | 40439.3 | 47594.5 |
| 60°   | 44981.1 | 45267.0 | 44716.8 | 39452.2 | 41199.9 | 45895.4 | 48770.4 | 49760.2 | 44654.8 | 43880.7 | 49633.5 |
| 62.5° | 43797.1 | 44212.5 | 45010.8 | 41952.3 | 42874.7 | 46658.7 | 49320.6 | 50636.8 | 47848.1 | 47891.2 | 50890.3 |
| 65°   | 41434.5 | 41766.2 | 43120.2 | 43322.4 | 43845.7 | 46564.3 | 47961.3 | 49412.3 | 49803.4 | 51575.4 | 50822.9 |
| 67.5° | 38581.0 | 38705.1 | 39854.0 | 43430.3 | 42437.8 | 43727.0 | 43878.0 | 44951.4 | 48258.0 | 52880.7 | 48781.2 |
| 70°   | 34473.5 | 34540.9 | 35544.2 | 39819.0 | 36469.3 | 36752.5 | 36528.6 | 36747.1 | 41488.4 | 49700.9 | 43627.2 |
| 72.5° | 27744.4 | 27914.3 | 29341.0 | 33068.3 | 26568.5 | 25751.3 | 27509.7 | 27412.6 | 31951.7 | 41990.1 | 32402.1 |
| 75°   | 20427.3 | 20721.3 | 22876.2 | 26635.9 | 18647.3 | 16867.2 | 18151.0 | 18493.6 | 22714.4 | 32480.4 | 20262.8 |
| 77.5° | 14302.4 | 14520.8 | 16608.3 | 19580.5 | 13496.0 | 12061.1 | 11597.2 | 12004.5 | 14992.8 | 23496.5 | 10208.3 |
| 80°   | 8239.4  | 8320.3  | 9652.7  | 11306.0 | 9094.4  | 10405.2 | 9426.1  | 9706.6  | 8983.8  | 10453.7 | 4390.8  |
| 82.5° | 5391.4  | 5404.9  | 5925.4  | 6729.1  | 5663.8  | 6580.8  | 4870.8  | 6227.4  | 5526.2  | 4199.3  | 1429.4  |
| 85°   | 2912.8  | 2929.0  | 3436.0  | 4776.4  | 3206.8  | 1812.4  | 1065.3  | 2187.3  | 3417.1  | 962.8   | 391.1   |
| 87.5° | 320.9   | 294.0   | 1035.7  | 1736.9  | 890.0   | 164.5   | 56.6    | 245.4   | 547.5   | 62.0    | 0.0     |
| 90°   | 0.0     | 0.0     | 0.0     | 0.0     | 0.0     | 0.0     | 0.0     | 0.0     | 0.0     | 0.0     | 0.0     |



REPORT NUMBER: P324264

CATALOG NUMBER: GLEON-SA0D-760-U-SLL-HSS

**CANDELA DISTRIBUTION (continued):**

|       | 90°     | 95°     | 105°    | 115°    | 125°    | 135°    | 145°    | 155°    | 165°    | 175°    | 180°    |
|-------|---------|---------|---------|---------|---------|---------|---------|---------|---------|---------|---------|
| 0°    | 19100.4 | 19100.4 | 19100.4 | 19100.4 | 19100.4 | 19100.4 | 19100.4 | 19100.4 | 19100.4 | 19100.4 | 19100.4 |
| 2.5°  | 20424.6 | 20200.8 | 19642.5 | 19051.8 | 18577.2 | 18132.1 | 17684.4 | 17136.9 | 16713.5 | 16627.2 | 16487.0 |
| 5°    | 19987.7 | 19278.4 | 18107.9 | 16932.0 | 15985.3 | 14790.5 | 14032.7 | 13442.0 | 12864.8 | 12829.8 | 12713.8 |
| 7.5°  | 18461.2 | 17528.0 | 15880.1 | 14253.8 | 12921.5 | 11783.3 | 10634.4 | 9865.7  | 9261.6  | 9048.5  | 8921.8  |
| 10°   | 16994.0 | 15944.9 | 13887.0 | 12031.5 | 10842.1 | 9836.1  | 9027.0  | 8223.3  | 7495.1  | 6993.4  | 6766.9  |
| 12.5° | 15969.1 | 14809.4 | 12541.2 | 10941.9 | 10089.6 | 9134.8  | 8147.7  | 7144.4  | 6305.7  | 5701.5  | 5332.0  |
| 15°   | 15572.7 | 14334.7 | 12090.8 | 10510.3 | 9458.5  | 8250.2  | 6988.0  | 5841.8  | 4911.3  | 4363.8  | 4032.1  |
| 17.5° | 16044.6 | 14604.4 | 12055.7 | 9984.4  | 8514.5  | 7012.3  | 5617.9  | 4264.0  | 3387.5  | 2972.1  | 2759.1  |
| 20°   | 17242.1 | 15462.1 | 12042.2 | 9339.8  | 7392.6  | 5545.1  | 3805.5  | 2804.9  | 2273.6  | 2041.7  | 1941.9  |
| 22.5° | 18935.9 | 16557.1 | 12150.1 | 8703.3  | 6224.8  | 3961.9  | 2626.9  | 2060.5  | 1788.1  | 1664.1  | 1607.4  |
| 25°   | 21115.1 | 18094.4 | 12454.9 | 8126.2  | 5127.1  | 2955.9  | 2047.0  | 1726.1  | 1534.6  | 1437.5  | 1397.1  |
| 27.5° | 23437.2 | 19863.6 | 12929.6 | 7624.5  | 4234.3  | 2357.2  | 1753.1  | 1478.0  | 1340.4  | 1273.0  | 1235.2  |
| 30°   | 25352.1 | 21913.4 | 13409.6 | 7066.2  | 3587.1  | 2055.1  | 1604.7  | 1348.5  | 1189.4  | 1146.2  | 1111.2  |
| 32.5° | 27027.0 | 23464.2 | 13749.5 | 6561.9  | 3163.6  | 1825.9  | 1451.0  | 1205.6  | 1097.7  | 1014.1  | 976.3   |
| 35°   | 28761.2 | 24756.1 | 13738.7 | 6208.6  | 2872.3  | 1653.3  | 1321.5  | 1078.8  | 949.4   | 852.3   | 822.6   |
| 37.5° | 30638.3 | 26215.2 | 13504.0 | 5906.5  | 2745.6  | 1515.7  | 1248.7  | 1011.4  | 881.9   | 784.8   | 747.1   |
| 40°   | 32836.4 | 27747.1 | 13264.0 | 5623.3  | 2710.5  | 1405.2  | 1197.5  | 957.4   | 819.9   | 725.5   | 687.7   |
| 42.5° | 34977.8 | 29127.9 | 13053.6 | 5412.9  | 2559.5  | 1402.5  | 1151.6  | 917.0   | 771.4   | 679.7   | 636.5   |
| 45°   | 36690.4 | 30414.4 | 13013.2 | 5286.2  | 2400.4  | 1451.0  | 1127.4  | 890.0   | 733.6   | 641.9   | 601.4   |
| 47.5° | 38114.5 | 31811.5 | 13272.1 | 5197.2  | 2249.3  | 1324.2  | 1186.7  | 871.1   | 698.5   | 609.5   | 563.7   |
| 50°   | 39808.2 | 33526.8 | 13881.6 | 5051.5  | 2090.2  | 1192.1  | 1359.3  | 876.5   | 668.9   | 577.2   | 528.6   |
| 52.5° | 42170.8 | 35900.2 | 14777.0 | 4806.1  | 1871.7  | 1070.7  | 1337.7  | 881.9   | 636.5   | 542.1   | 493.6   |
| 55°   | 44819.3 | 38864.2 | 15739.9 | 4398.9  | 1567.0  | 911.6   | 1146.2  | 844.2   | 574.5   | 504.3   | 458.5   |
| 57.5° | 47602.6 | 41553.2 | 16311.7 | 3913.4  | 1246.0  | 787.5   | 917.0   | 768.7   | 507.0   | 453.1   | 423.4   |
| 60°   | 48039.5 | 42575.4 | 16050.0 | 3317.3  | 989.8   | 685.0   | 679.7   | 782.1   | 453.1   | 399.2   | 377.6   |
| 62.5° | 46952.6 | 41291.6 | 14785.1 | 2786.0  | 828.0   | 601.4   | 558.3   | 682.3   | 409.9   | 356.0   | 334.4   |
| 65°   | 44862.4 | 37820.5 | 12735.4 | 2510.9  | 768.7   | 515.1   | 463.9   | 480.1   | 358.7   | 310.2   | 291.3   |
| 67.5° | 41955.0 | 33187.0 | 10456.4 | 2354.5  | 760.6   | 442.3   | 396.5   | 364.1   | 310.2   | 269.7   | 253.5   |
| 70°   | 36010.8 | 27647.3 | 8341.9  | 2268.2  | 739.0   | 372.2   | 334.4   | 296.7   | 258.9   | 229.2   | 215.8   |
| 72.5° | 26503.7 | 19591.2 | 6489.1  | 2173.8  | 744.4   | 296.7   | 291.3   | 245.4   | 207.7   | 178.0   | 172.6   |
| 75°   | 15313.7 | 11192.7 | 4255.9  | 1761.2  | 709.3   | 229.2   | 242.7   | 172.6   | 145.6   | 124.1   | 124.1   |
| 77.5° | 8161.2  | 6826.2  | 1620.9  | 733.6   | 258.9   | 145.6   | 137.5   | 102.5   | 91.7    | 75.5    | 72.8    |
| 80°   | 3557.4  | 3004.5  | 488.2   | 205.0   | 142.9   | 78.2    | 51.2    | 45.8    | 40.5    | 32.4    | 29.7    |
| 82.5° | 1259.5  | 1086.9  | 159.1   | 99.8    | 62.0    | 0.0     | 0.0     | 0.0     | 0.0     | 0.0     | 0.0     |
| 85°   | 285.9   | 205.0   | 0.0     | 24.3    | 0.0     | 0.0     | 0.0     | 0.0     | 0.0     | 0.0     | 0.0     |
| 87.5° | 0.0     | 0.0     | 0.0     | 0.0     | 0.0     | 0.0     | 0.0     | 0.0     | 0.0     | 0.0     | 0.0     |
| 90°   | 0.0     | 0.0     | 0.0     | 0.0     | 0.0     | 0.0     | 0.0     | 0.0     | 0.0     | 0.0     | 0.0     |





REPORT NUMBER: P324264

CATALOG NUMBER: GLEON-SA0D-760-U-SLL-HSS

**CANDELA DISTRIBUTION (continued):**

|       | 185°    | 195°    | 205°    | 215°    | 225°    | 235°    | 245°    | 255°    | 265°    | 270°    | 275°    |
|-------|---------|---------|---------|---------|---------|---------|---------|---------|---------|---------|---------|
| 0°    | 19100.4 | 19100.4 | 19100.4 | 19100.4 | 19100.4 | 19100.4 | 19100.4 | 19100.4 | 19100.4 | 19100.4 | 19100.4 |
| 2.5°  | 16201.1 | 16141.7 | 15791.1 | 15804.6 | 15866.6 | 15955.6 | 15745.3 | 15842.4 | 16104.0 | 16354.8 | 16449.2 |
| 5°    | 12527.7 | 12541.2 | 12328.1 | 12460.3 | 12579.0 | 12659.9 | 12320.0 | 12325.4 | 12533.1 | 12816.3 | 12964.6 |
| 7.5°  | 8827.4  | 8805.8  | 8816.6  | 9132.2  | 9356.0  | 9194.2  | 9320.9  | 8881.3  | 8908.3  | 9110.6  | 8959.5  |
| 10°   | 6561.9  | 6265.2  | 6098.0  | 6335.3  | 6580.8  | 6491.8  | 6273.3  | 6130.4  | 6230.1  | 6454.0  | 6437.8  |
| 12.5° | 5156.7  | 4730.6  | 4479.8  | 4309.9  | 4512.1  | 4344.9  | 4339.5  | 4215.5  | 4080.6  | 4104.9  | 4463.6  |
| 15°   | 3878.3  | 3568.2  | 3271.5  | 2999.1  | 2993.7  | 2937.1  | 2648.5  | 2324.8  | 2297.9  | 2314.1  | 2500.1  |
| 17.5° | 2667.4  | 2562.2  | 2440.8  | 2206.2  | 2144.1  | 1906.8  | 1626.3  | 1496.9  | 1432.1  | 1461.8  | 1523.8  |
| 20°   | 1874.4  | 1834.0  | 1847.5  | 1720.7  | 1631.7  | 1405.2  | 1240.6  | 1189.4  | 1178.6  | 1208.3  | 1237.9  |
| 22.5° | 1553.5  | 1480.7  | 1472.6  | 1415.9  | 1326.9  | 1162.4  | 1073.4  | 1043.8  | 1030.3  | 1057.2  | 1078.8  |
| 25°   | 1359.3  | 1286.5  | 1256.8  | 1221.8  | 1127.4  | 1014.1  | 960.1   | 933.2   | 919.7   | 935.9   | 949.4   |
| 27.5° | 1197.5  | 1130.1  | 1103.1  | 1078.8  | 987.1   | 906.2   | 863.1   | 838.8   | 828.0   | 833.4   | 846.9   |
| 30°   | 1076.1  | 1016.8  | 981.7   | 952.1   | 873.8   | 817.2   | 779.4   | 755.2   | 744.4   | 744.4   | 757.9   |
| 32.5° | 949.4   | 917.0   | 884.6   | 846.9   | 774.0   | 736.3   | 698.5   | 671.6   | 660.8   | 663.5   | 674.3   |
| 35°   | 790.2   | 779.4   | 787.5   | 752.5   | 690.4   | 658.1   | 620.3   | 590.7   | 582.6   | 585.3   | 596.0   |
| 37.5° | 701.2   | 652.7   | 682.3   | 663.5   | 628.4   | 585.3   | 536.7   | 509.7   | 496.3   | 504.3   | 509.7   |
| 40°   | 644.6   | 585.3   | 563.7   | 582.6   | 577.2   | 507.0   | 463.9   | 436.9   | 426.1   | 428.8   | 434.2   |
| 42.5° | 596.0   | 525.9   | 477.4   | 474.7   | 507.0   | 442.3   | 396.5   | 372.2   | 358.7   | 358.7   | 364.1   |
| 45°   | 550.2   | 474.7   | 415.3   | 369.5   | 426.1   | 374.9   | 331.7   | 310.2   | 294.0   | 294.0   | 296.7   |
| 47.5° | 515.1   | 431.5   | 361.4   | 302.1   | 320.9   | 307.5   | 272.4   | 250.8   | 234.6   | 234.6   | 237.3   |
| 50°   | 482.8   | 388.4   | 312.9   | 253.5   | 240.0   | 253.5   | 221.2   | 196.9   | 186.1   | 183.4   | 188.8   |
| 52.5° | 447.7   | 345.2   | 267.0   | 215.8   | 188.8   | 191.5   | 172.6   | 156.4   | 142.9   | 142.9   | 148.3   |
| 55°   | 412.6   | 310.2   | 231.9   | 183.4   | 156.4   | 142.9   | 137.5   | 126.8   | 116.0   | 116.0   | 121.4   |
| 57.5° | 377.6   | 272.4   | 196.9   | 151.0   | 124.1   | 113.3   | 113.3   | 105.2   | 97.1    | 97.1    | 102.5   |
| 60°   | 345.2   | 234.6   | 161.8   | 124.1   | 97.1    | 94.4    | 97.1    | 89.0    | 83.6    | 83.6    | 89.0    |
| 62.5° | 307.5   | 199.6   | 132.2   | 102.5   | 78.2    | 75.5    | 83.6    | 78.2    | 72.8    | 72.8    | 78.2    |
| 65°   | 261.6   | 169.9   | 105.2   | 78.2    | 59.3    | 59.3    | 70.1    | 64.7    | 59.3    | 59.3    | 64.7    |
| 67.5° | 221.2   | 142.9   | 80.9    | 56.6    | 43.2    | 45.8    | 59.3    | 53.9    | 51.2    | 51.2    | 56.6    |
| 70°   | 183.4   | 110.6   | 56.6    | 35.1    | 24.3    | 35.1    | 45.8    | 45.8    | 45.8    | 45.8    | 51.2    |
| 72.5° | 137.5   | 75.5    | 32.4    | 13.5    | 10.8    | 24.3    | 37.8    | 43.2    | 40.5    | 40.5    | 48.5    |
| 75°   | 89.0    | 43.2    | 10.8    | 0.0     | 0.0     | 13.5    | 29.7    | 35.1    | 35.1    | 32.4    | 40.5    |
| 77.5° | 51.2    | 13.5    | 0.0     | 0.0     | 0.0     | 0.0     | 18.9    | 16.2    | 13.5    | 10.8    | 18.9    |
| 80°   | 13.5    | 0.0     | 0.0     | 0.0     | 0.0     | 0.0     | 0.0     | 0.0     | 0.0     | 0.0     | 0.0     |
| 82.5° | 0.0     | 0.0     | 0.0     | 0.0     | 0.0     | 0.0     | 0.0     | 0.0     | 0.0     | 0.0     | 0.0     |
| 85°   | 0.0     | 0.0     | 0.0     | 0.0     | 0.0     | 0.0     | 0.0     | 0.0     | 0.0     | 0.0     | 0.0     |
| 87.5° | 0.0     | 0.0     | 0.0     | 0.0     | 0.0     | 0.0     | 0.0     | 0.0     | 0.0     | 0.0     | 0.0     |
| 90°   | 0.0     | 0.0     | 0.0     | 0.0     | 0.0     | 0.0     | 0.0     | 0.0     | 0.0     | 0.0     | 0.0     |



REPORT NUMBER: P324264

CATALOG NUMBER: GLEON-SA0D-760-U-SLL-HSS

**CANDELA DISTRIBUTION (continued):**

|       | 285°    | 295°    | 305°    | 315°    | 325°    | 335°    | 345°    | 355°    | 359°    | 360°    |
|-------|---------|---------|---------|---------|---------|---------|---------|---------|---------|---------|
| 0°    | 19100.4 | 19100.4 | 19100.4 | 19100.4 | 19100.4 | 19100.4 | 19100.4 | 19100.4 | 19100.4 | 19100.4 |
| 2.5°  | 16829.5 | 17147.7 | 17595.4 | 18070.1 | 18801.0 | 19380.9 | 19949.9 | 20438.1 | 20626.9 | 20705.1 |
| 5°    | 13320.6 | 13787.2 | 14442.6 | 15284.1 | 16602.9 | 17789.6 | 18992.5 | 20203.5 | 20729.4 | 20861.5 |
| 7.5°  | 9558.3  | 10154.3 | 10987.7 | 12042.2 | 13587.6 | 15125.0 | 16805.2 | 18582.6 | 19397.1 | 19602.0 |
| 10°   | 7074.3  | 7802.5  | 8757.3  | 9868.4  | 11343.7 | 12924.2 | 14755.5 | 16786.3 | 17716.8 | 17989.2 |
| 12.5° | 5019.2  | 6003.6  | 7282.0  | 8633.2  | 9911.6  | 11322.1 | 13175.0 | 15413.5 | 16389.9 | 16683.8 |
| 15°   | 2947.9  | 3899.9  | 5412.9  | 7222.7  | 8859.8  | 10289.2 | 12171.7 | 14709.6 | 15785.7 | 16082.4 |
| 17.5° | 1691.0  | 2165.7  | 3309.3  | 5326.6  | 7549.0  | 9528.6  | 11856.2 | 14884.9 | 16152.5 | 16427.6 |
| 20°   | 1291.9  | 1442.9  | 1906.8  | 3430.6  | 6017.1  | 8781.5  | 11856.2 | 15877.4 | 17439.0 | 17843.6 |
| 22.5° | 1130.1  | 1240.6  | 1429.4  | 2047.0  | 4428.5  | 7980.5  | 11993.7 | 17312.3 | 19353.9 | 19801.6 |
| 25°   | 1003.3  | 1103.1  | 1264.9  | 1540.0  | 3020.7  | 7028.5  | 12320.0 | 19073.4 | 21608.6 | 22188.5 |
| 27.5° | 898.1   | 992.5   | 1138.1  | 1348.5  | 2065.9  | 5879.5  | 12759.7 | 21139.3 | 24095.3 | 24559.2 |
| 30°   | 803.7   | 892.7   | 1024.9  | 1173.2  | 1593.9  | 4576.9  | 13134.5 | 23086.6 | 26047.9 | 26546.9 |
| 32.5° | 714.7   | 795.6   | 914.3   | 1024.9  | 1305.4  | 3384.8  | 13175.0 | 24629.3 | 27668.9 | 28165.1 |
| 35°   | 631.1   | 703.9   | 811.8   | 898.1   | 1081.5  | 2672.8  | 12546.6 | 25967.0 | 29289.8 | 29945.2 |
| 37.5° | 550.2   | 620.3   | 714.7   | 779.4   | 952.1   | 2179.2  | 11586.5 | 27458.5 | 31369.2 | 31976.0 |
| 40°   | 474.7   | 536.7   | 633.8   | 677.0   | 900.8   | 1674.9  | 10542.7 | 29022.8 | 33408.1 | 33963.7 |
| 42.5° | 404.6   | 463.9   | 558.3   | 641.9   | 790.2   | 1251.4  | 9415.3  | 30490.0 | 35242.1 | 35824.7 |
| 45°   | 337.1   | 399.2   | 493.6   | 679.7   | 655.4   | 935.9   | 8209.8  | 31463.6 | 36690.4 | 37324.2 |
| 47.5° | 272.4   | 342.5   | 472.0   | 647.3   | 523.2   | 687.7   | 7255.0  | 32386.0 | 37788.1 | 38413.8 |
| 50°   | 218.5   | 288.6   | 531.3   | 577.2   | 428.8   | 525.9   | 6855.9  | 33211.3 | 38508.2 | 39109.7 |
| 52.5° | 178.0   | 242.7   | 501.6   | 442.3   | 358.7   | 434.2   | 7071.6  | 34549.0 | 39174.4 | 39552.0 |
| 55°   | 148.3   | 191.5   | 302.1   | 307.5   | 304.8   | 369.5   | 7338.6  | 36469.3 | 40897.8 | 41075.8 |
| 57.5° | 129.5   | 153.7   | 210.4   | 237.3   | 256.2   | 329.0   | 7344.0  | 39225.6 | 43565.2 | 43675.7 |
| 60°   | 110.6   | 134.9   | 175.3   | 191.5   | 221.2   | 294.0   | 7077.0  | 40188.5 | 44614.3 | 44981.1 |
| 62.5° | 97.1    | 118.7   | 145.6   | 159.1   | 186.1   | 264.3   | 6451.3  | 38794.1 | 43174.1 | 43797.1 |
| 65°   | 86.3    | 107.9   | 121.4   | 134.9   | 164.5   | 237.3   | 5421.0  | 36005.4 | 40784.5 | 41434.5 |
| 67.5° | 75.5    | 94.4    | 107.9   | 121.4   | 148.3   | 210.4   | 3991.6  | 32766.2 | 38041.6 | 38581.0 |
| 70°   | 67.4    | 83.6    | 97.1    | 107.9   | 129.5   | 178.0   | 2421.9  | 27803.7 | 34249.6 | 34473.5 |
| 72.5° | 64.7    | 75.5    | 89.0    | 97.1    | 113.3   | 156.4   | 1227.1  | 20432.7 | 27380.3 | 27744.4 |
| 75°   | 56.6    | 67.4    | 80.9    | 86.3    | 99.8    | 134.9   | 499.0   | 13420.4 | 19842.1 | 20427.3 |
| 77.5° | 45.8    | 62.0    | 72.8    | 78.2    | 86.3    | 110.6   | 253.5   | 8576.6  | 13924.8 | 14302.4 |
| 80°   | 16.2    | 45.8    | 62.0    | 64.7    | 72.8    | 80.9    | 167.2   | 4695.5  | 8077.6  | 8239.4  |
| 82.5° | 0.0     | 29.7    | 48.5    | 45.8    | 51.2    | 62.0    | 107.9   | 2233.1  | 5332.0  | 5391.4  |
| 85°   | 0.0     | 13.5    | 37.8    | 29.7    | 21.6    | 43.2    | 37.8    | 488.2   | 2796.8  | 2912.8  |
| 87.5° | 0.0     | 0.0     | 2.7     | 13.5    | 10.8    | 16.2    | 5.4     | 2.7     | 253.5   | 320.9   |
| 90°   | 0.0     | 0.0     | 0.0     | 0.0     | 0.0     | 0.0     | 0.0     | 0.0     | 0.0     | 0.0     |

Signify Classified - Internal  
Cooper Lighting Solutions Photometric Lab  
1121 Highway 74 South  
Peachtree City, GA 30269



LM-79-2008: Approved Method: Electrical and Photometric Measurements of Solid-State Lighting Products

Report Prepared for

Cooper Lighting Solutions

McGRAW-EDISON

Report Number: SP1-1908-441-9-R4

Test Date: 10/23/2019

Luminaire Tested: SA1C-760-U-5WQ

Data in this report applies to families of products SA1C-760-U-5WQ .

**Test Information**

Test Method: LM-79-2008  
 Report Number: SP1-1908-441-9-R4  
 Test Lab: COOPER LIGHTING SOLUTIONS  
 Photometer: SP1 - 76IN SPHERE  
 Measurement Geometry: 4π  
 Issue Date: 10/28/2024  
 Manufacturer: COOPER LIGHTING SOLUTIONS  
 Product Line: McGRAW-EDISON  
 Catalog Number: **SA1C-760-U-5WQ**  
 Description: McGRAW EDISON ROADWAY AND AREA LUMINAIRE

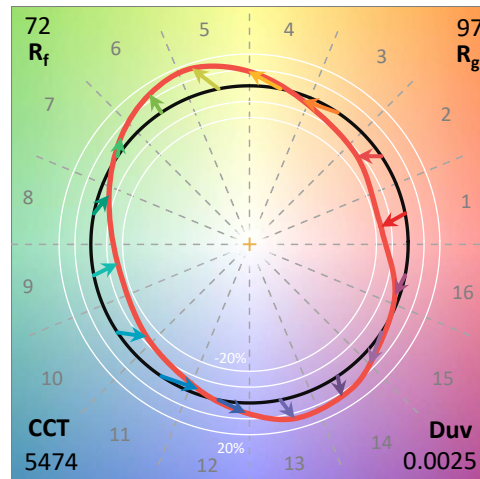
\*\*\*THIS IS A REVISION OF SP1-1908-441-4-R3. TO UPDATE THE CATALOG INFORMATION.\*\*\*TESTED IN SITU. ROADWAY AND AREA LUMINAIRE. (1) 70 CRI, 5000K, 1050MA LIGHTSQUARE WITH 16 LEDS AND TYPE V WIDE OPTICS.

**Spectral Parameters**

CCT (K): 5474  
 CIE u': 0.2052  
 CIE v': 0.4804  
 Duv: 0.0025  
 CIE x: 0.3330  
 CIE y: 0.3466  
 CIE z: 0.3204  
 Peak Wavelength (nm): 442  
 Dominant Wavelength (nm): 554  
 Purity: 4.1

|           |      |      |       |
|-----------|------|------|-------|
| CRI (Ra): | 71.7 |      |       |
| R1:       | 70.6 | R9:  | -27.1 |
| R2:       | 74.6 | R10: | 40.8  |
| R3:       | 78.3 | R11: | 74.6  |
| R4:       | 73.8 | R12: | 50.4  |
| R5:       | 72.4 | R13: | 70.0  |
| R6:       | 67.5 | R14: | 87.8  |
| R7:       | 77.5 |      |       |
| R8:       | 58.9 |      |       |

Rf: 72.1  
 Rg: 97.2



**Test Conditions**

Stabilization Time: 240M  
 Operation Time: 12H  
 Room Temperature (°C) / RH%: 24.6/31%  
 Sphere Temperature (°C): 25.9

REPORT NUMBER: SP1-1908-441-9-R4

| Measurement and Test Equipment |                       |                  |                      |
|--------------------------------|-----------------------|------------------|----------------------|
| Instrument                     | Identification Number | Calibration Date | Calibration Due Date |
| Photometer                     | IN0058                | 6/28/2019        | 12/28/2019           |
| Power Meter                    | IN0071                | 12/5/2018        | 12/5/2019            |
| AC Power Source                | IN0063                | 12/5/2018        | 12/5/2019            |
| DC Power Source                | IN0208                | 12/5/2018        | 12/5/2019            |
| Sphere Thermometer             | IN0085                | 12/5/2018        | 12/5/2019            |
| Room Thermometer               | IN0046                | 12/5/2018        | 12/5/2019            |

REPORT NUMBER: SP1-1908-441-9-R4

CIE 1931 Chromaticity Diagram



CIE 1931 Chromaticity Diagram with 2017 ANSI 7-Step and 4-Step Quadrangles



Point lies inside the ANSI 5700K 4-step quadrangle

REPORT NUMBER: SP1-1908-441-9-R4

**Photopic Flux vs. Wavelength**



#####

| $\lambda$<br>(nm) | Power<br>( $\mu\text{W}/\text{nm}$ ) | Lumens<br>( $\phi/\text{nm}$ ) | $\lambda$<br>(nm) | Power<br>( $\mu\text{W}/\text{nm}$ ) | Lumens<br>( $\phi/\text{nm}$ ) | $\lambda$<br>(nm) | Power<br>( $\mu\text{W}/\text{nm}$ ) | Lumens<br>( $\phi/\text{nm}$ ) | $\lambda$<br>(nm) | Power<br>( $\mu\text{W}/\text{nm}$ ) | Lumens<br>( $\phi/\text{nm}$ ) | $\lambda$<br>(nm) | Power<br>( $\mu\text{W}/\text{nm}$ ) | Lumens<br>( $\phi/\text{nm}$ ) |
|-------------------|--------------------------------------|--------------------------------|-------------------|--------------------------------------|--------------------------------|-------------------|--------------------------------------|--------------------------------|-------------------|--------------------------------------|--------------------------------|-------------------|--------------------------------------|--------------------------------|
| 360               | 3540                                 | NR                             | 490               | 33363                                | NR                             | 620               | 80193                                | NR                             | 750               | 4663                                 | NR                             | 880               | 4678                                 | NR                             |
| 365               | 2862                                 | NR                             | 495               | 44177                                | NR                             | 625               | 73091                                | NR                             | 755               | 4147                                 | NR                             | 885               | 4128                                 | NR                             |
| 370               | 2865                                 | NR                             | 500               | 57019                                | NR                             | 630               | 66269                                | NR                             | 760               | 4040                                 | NR                             | 890               | 4504                                 | NR                             |
| 375               | 3254                                 | NR                             | 505               | 70030                                | NR                             | 635               | 60012                                | NR                             | 765               | 3474                                 | NR                             | 895               | 4371                                 | NR                             |
| 380               | 3076                                 | NR                             | 510               | 81972                                | NR                             | 640               | 53914                                | NR                             | 770               | 3469                                 | NR                             | 900               | 4082                                 | NR                             |
| 385               | 2904                                 | NR                             | 515               | 92590                                | NR                             | 645               | 48385                                | NR                             | 775               | 3181                                 | NR                             | 905               | 2982                                 | NR                             |
| 390               | 2689                                 | NR                             | 520               | 100305                               | NR                             | 650               | 43219                                | NR                             | 780               | 2969                                 | NR                             | 910               | 4351                                 | NR                             |
| 395               | 2619                                 | NR                             | 525               | 107452                               | NR                             | 655               | 38562                                | NR                             | 785               | 3132                                 | NR                             | 915               | 3365                                 | NR                             |
| 400               | 2679                                 | NR                             | 530               | 111373                               | NR                             | 660               | 34110                                | NR                             | 790               | 2507                                 | NR                             | 920               | 3430                                 | NR                             |
| 405               | 3515                                 | NR                             | 535               | 114505                               | NR                             | 665               | 30085                                | NR                             | 795               | 2968                                 | NR                             | 925               | 4264                                 | NR                             |
| 410               | 6934                                 | NR                             | 540               | 116408                               | NR                             | 670               | 26205                                | NR                             | 800               | 2758                                 | NR                             | 930               | 4095                                 | NR                             |
| 415               | 14943                                | NR                             | 545               | 118700                               | NR                             | 675               | 22906                                | NR                             | 805               | 2872                                 | NR                             | 935               | 5048                                 | NR                             |
| 420               | 31939                                | NR                             | 550               | 119209                               | NR                             | 680               | 20058                                | NR                             | 810               | 3094                                 | NR                             | 940               | 4074                                 | NR                             |
| 425               | 64701                                | NR                             | 555               | 120742                               | NR                             | 685               | 17413                                | NR                             | 815               | 3222                                 | NR                             | 945               | 4949                                 | NR                             |
| 430               | 110939                               | NR                             | 560               | 121594                               | NR                             | 690               | 15447                                | NR                             | 820               | 3238                                 | NR                             | 950               | 4387                                 | NR                             |
| 435               | 164597                               | NR                             | 565               | 121913                               | NR                             | 695               | 13398                                | NR                             | 825               | 3524                                 | NR                             | 955               | 4978                                 | NR                             |
| 440               | 207696                               | NR                             | 570               | 122147                               | NR                             | 700               | 11777                                | NR                             | 830               | 2921                                 | NR                             | 960               | 4706                                 | NR                             |
| 445               | 201830                               | NR                             | 575               | 121605                               | NR                             | 705               | 10412                                | NR                             | 835               | 3595                                 | NR                             | 965               | 5083                                 | NR                             |
| 450               | 145410                               | NR                             | 580               | 120248                               | NR                             | 710               | 9544                                 | NR                             | 840               | 3016                                 | NR                             | 970               | 4522                                 | NR                             |
| 455               | 89594                                | NR                             | 585               | 117717                               | NR                             | 715               | 8940                                 | NR                             | 845               | 4032                                 | NR                             | 975               | 4740                                 | NR                             |
| 460               | 58321                                | NR                             | 590               | 114359                               | NR                             | 720               | 7897                                 | NR                             | 850               | 3579                                 | NR                             | 980               | 6122                                 | NR                             |
| 465               | 39318                                | NR                             | 595               | 109974                               | NR                             | 725               | 7045                                 | NR                             | 855               | 4571                                 | NR                             | 985               | 6450                                 | NR                             |
| 470               | 27693                                | NR                             | 600               | 105269                               | NR                             | 730               | 6483                                 | NR                             | 860               | 4485                                 | NR                             | 990               | 4875                                 | NR                             |
| 475               | 23081                                | NR                             | 605               | 99453                                | NR                             | 735               | 5838                                 | NR                             | 865               | 3978                                 | NR                             | 995               | 4764                                 | NR                             |
| 480               | 23002                                | NR                             | 610               | 92921                                | NR                             | 740               | 5261                                 | NR                             | 870               | 4298                                 | NR                             | 1000              | 3640                                 | NR                             |
| 485               | 26201                                | NR                             | 615               | 86989                                | NR                             | 745               | 4760                                 | NR                             | 875               | 4356                                 | NR                             |                   |                                      |                                |

REPORT NUMBER: SP1-1908-441-9-R4

Scotopic Flux vs. Wavelength



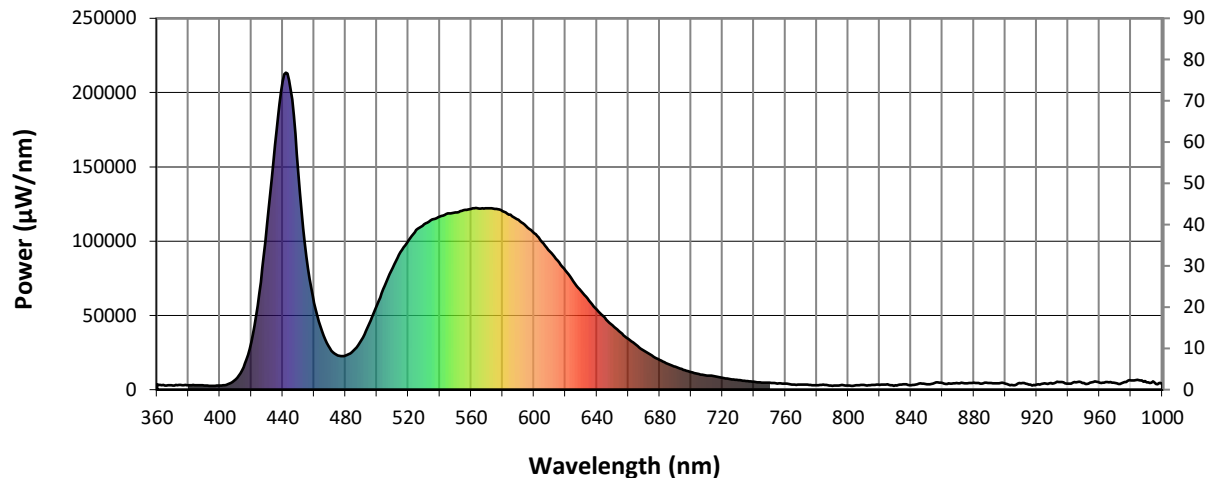
Scotopic Lumens: 13759.3 S/P: 1.85

| λ (nm) | Power (µW/nm) | Lumens (φ/nm) | λ (nm) | Power (µW/nm) | Lumens (φ/nm) | λ (nm) | Power (µW/nm) | Lumens (φ/nm) | λ (nm) | Power (µW/nm) | Lumens (φ/nm) | λ (nm) | Power (µW/nm) | Lumens (φ/nm) |
|--------|---------------|---------------|--------|---------------|---------------|--------|---------------|---------------|--------|---------------|---------------|--------|---------------|---------------|
| 360    | 3540          | NR            | 490    | 33363         | NR            | 620    | 80193         | NR            | 750    | 4663          | NR            | 880    | 4678          | NR            |
| 365    | 2862          | NR            | 495    | 44177         | NR            | 625    | 73091         | NR            | 755    | 4147          | NR            | 885    | 4128          | NR            |
| 370    | 2865          | NR            | 500    | 57019         | NR            | 630    | 66269         | NR            | 760    | 4040          | NR            | 890    | 4504          | NR            |
| 375    | 3254          | NR            | 505    | 70030         | NR            | 635    | 60012         | NR            | 765    | 3474          | NR            | 895    | 4371          | NR            |
| 380    | 3076          | NR            | 510    | 81972         | NR            | 640    | 53914         | NR            | 770    | 3469          | NR            | 900    | 4082          | NR            |
| 385    | 2904          | NR            | 515    | 92590         | NR            | 645    | 48385         | NR            | 775    | 3181          | NR            | 905    | 2982          | NR            |
| 390    | 2689          | NR            | 520    | 100305        | NR            | 650    | 43219         | NR            | 780    | 2969          | NR            | 910    | 4351          | NR            |
| 395    | 2619          | NR            | 525    | 107452        | NR            | 655    | 38562         | NR            | 785    | 3132          | NR            | 915    | 3365          | NR            |
| 400    | 2679          | NR            | 530    | 111373        | NR            | 660    | 34110         | NR            | 790    | 2507          | NR            | 920    | 3430          | NR            |
| 405    | 3515          | NR            | 535    | 114505        | NR            | 665    | 30085         | NR            | 795    | 2968          | NR            | 925    | 4264          | NR            |
| 410    | 6934          | NR            | 540    | 116408        | NR            | 670    | 26205         | NR            | 800    | 2758          | NR            | 930    | 4095          | NR            |
| 415    | 14943         | NR            | 545    | 118700        | NR            | 675    | 22906         | NR            | 805    | 2872          | NR            | 935    | 5048          | NR            |
| 420    | 31939         | NR            | 550    | 119209        | NR            | 680    | 20058         | NR            | 810    | 3094          | NR            | 940    | 4074          | NR            |
| 425    | 64701         | NR            | 555    | 120742        | NR            | 685    | 17413         | NR            | 815    | 3222          | NR            | 945    | 4949          | NR            |
| 430    | 110939        | NR            | 560    | 121594        | NR            | 690    | 15447         | NR            | 820    | 3238          | NR            | 950    | 4387          | NR            |
| 435    | 164597        | NR            | 565    | 121913        | NR            | 695    | 13398         | NR            | 825    | 3524          | NR            | 955    | 4978          | NR            |
| 440    | 207696        | NR            | 570    | 122147        | NR            | 700    | 11777         | NR            | 830    | 2921          | NR            | 960    | 4706          | NR            |
| 445    | 201830        | NR            | 575    | 121605        | NR            | 705    | 10412         | NR            | 835    | 3595          | NR            | 965    | 5083          | NR            |
| 450    | 145410        | NR            | 580    | 120248        | NR            | 710    | 9544          | NR            | 840    | 3016          | NR            | 970    | 4522          | NR            |
| 455    | 89594         | NR            | 585    | 117717        | NR            | 715    | 8940          | NR            | 845    | 4032          | NR            | 975    | 4740          | NR            |
| 460    | 58321         | NR            | 590    | 114359        | NR            | 720    | 7897          | NR            | 850    | 3579          | NR            | 980    | 6122          | NR            |
| 465    | 39318         | NR            | 595    | 109974        | NR            | 725    | 7045          | NR            | 855    | 4571          | NR            | 985    | 6450          | NR            |
| 470    | 27693         | NR            | 600    | 105269        | NR            | 730    | 6483          | NR            | 860    | 4485          | NR            | 990    | 4875          | NR            |
| 475    | 23081         | NR            | 605    | 99453         | NR            | 735    | 5838          | NR            | 865    | 3978          | NR            | 995    | 4764          | NR            |
| 480    | 23002         | NR            | 610    | 92921         | NR            | 740    | 5261          | NR            | 870    | 4298          | NR            | 1000   | 3640          | NR            |
| 485    | 26201         | NR            | 615    | 86989         | NR            | 745    | 4760          | NR            | 875    | 4356          | NR            |        |               |               |



REPORT NUMBER: SP1-1908-441-9-R4

**Melanopic Flux vs. Wavelength**



**Melanopic Lumens: 5527.6 M/P: 0.74**

| λ (nm) | Power (µW/nm) | Lumens (φ/nm) | λ (nm) | Power (µW/nm) | Lumens (φ/nm) | λ (nm) | Power (µW/nm) | Lumens (φ/nm) | λ (nm) | Power (µW/nm) | Lumens (φ/nm) | λ (nm) | Power (µW/nm) | Lumens (φ/nm) |
|--------|---------------|---------------|--------|---------------|---------------|--------|---------------|---------------|--------|---------------|---------------|--------|---------------|---------------|
| 360    | 3540          | NR            | 490    | 33363         | NR            | 620    | 80193         | NR            | 750    | 4663          | NR            | 880    | 4678          | NR            |
| 365    | 2862          | NR            | 495    | 44177         | NR            | 625    | 73091         | NR            | 755    | 4147          | NR            | 885    | 4128          | NR            |
| 370    | 2865          | NR            | 500    | 57019         | NR            | 630    | 66269         | NR            | 760    | 4040          | NR            | 890    | 4504          | NR            |
| 375    | 3254          | NR            | 505    | 70030         | NR            | 635    | 60012         | NR            | 765    | 3474          | NR            | 895    | 4371          | NR            |
| 380    | 3076          | NR            | 510    | 81972         | NR            | 640    | 53914         | NR            | 770    | 3469          | NR            | 900    | 4082          | NR            |
| 385    | 2904          | NR            | 515    | 92590         | NR            | 645    | 48385         | NR            | 775    | 3181          | NR            | 905    | 2982          | NR            |
| 390    | 2689          | NR            | 520    | 100305        | NR            | 650    | 43219         | NR            | 780    | 2969          | NR            | 910    | 4351          | NR            |
| 395    | 2619          | NR            | 525    | 107452        | NR            | 655    | 38562         | NR            | 785    | 3132          | NR            | 915    | 3365          | NR            |
| 400    | 2679          | NR            | 530    | 111373        | NR            | 660    | 34110         | NR            | 790    | 2507          | NR            | 920    | 3430          | NR            |
| 405    | 3515          | NR            | 535    | 114505        | NR            | 665    | 30085         | NR            | 795    | 2968          | NR            | 925    | 4264          | NR            |
| 410    | 6934          | NR            | 540    | 116408        | NR            | 670    | 26205         | NR            | 800    | 2758          | NR            | 930    | 4095          | NR            |
| 415    | 14943         | NR            | 545    | 118700        | NR            | 675    | 22906         | NR            | 805    | 2872          | NR            | 935    | 5048          | NR            |
| 420    | 31939         | NR            | 550    | 119209        | NR            | 680    | 20058         | NR            | 810    | 3094          | NR            | 940    | 4074          | NR            |
| 425    | 64701         | NR            | 555    | 120742        | NR            | 685    | 17413         | NR            | 815    | 3222          | NR            | 945    | 4949          | NR            |
| 430    | 110939        | NR            | 560    | 121594        | NR            | 690    | 15447         | NR            | 820    | 3238          | NR            | 950    | 4387          | NR            |
| 435    | 164597        | NR            | 565    | 121913        | NR            | 695    | 13398         | NR            | 825    | 3524          | NR            | 955    | 4978          | NR            |
| 440    | 207696        | NR            | 570    | 122147        | NR            | 700    | 11777         | NR            | 830    | 2921          | NR            | 960    | 4706          | NR            |
| 445    | 201830        | NR            | 575    | 121605        | NR            | 705    | 10412         | NR            | 835    | 3595          | NR            | 965    | 5083          | NR            |
| 450    | 145410        | NR            | 580    | 120248        | NR            | 710    | 9544          | NR            | 840    | 3016          | NR            | 970    | 4522          | NR            |
| 455    | 89594         | NR            | 585    | 117717        | NR            | 715    | 8940          | NR            | 845    | 4032          | NR            | 975    | 4740          | NR            |
| 460    | 58321         | NR            | 590    | 114359        | NR            | 720    | 7897          | NR            | 850    | 3579          | NR            | 980    | 6122          | NR            |
| 465    | 39318         | NR            | 595    | 109974        | NR            | 725    | 7045          | NR            | 855    | 4571          | NR            | 985    | 6450          | NR            |
| 470    | 27693         | NR            | 600    | 105269        | NR            | 730    | 6483          | NR            | 860    | 4485          | NR            | 990    | 4875          | NR            |
| 475    | 23081         | NR            | 605    | 99453         | NR            | 735    | 5838          | NR            | 865    | 3978          | NR            | 995    | 4764          | NR            |
| 480    | 23002         | NR            | 610    | 92921         | NR            | 740    | 5261          | NR            | 870    | 4298          | NR            | 1000   | 3640          | NR            |
| 485    | 26201         | NR            | 615    | 86989         | NR            | 745    | 4760          | NR            | 875    | 4356          | NR            |        |               |               |

REPORT NUMBER: SP1-1908-441-9-R4

TM-30-18

**Summary**

$R_f = 72.1$   
 $R_g = 97.2$   
 CIE  $R_a = 71.7$   
 $R_9 = -27.1$



**Color Vector Graphics**



REPORT NUMBER: SP1-1908-441-9-R4

TM-30-18

**Individual Sample Fidelity Index ( $R_{f,i}$ )**

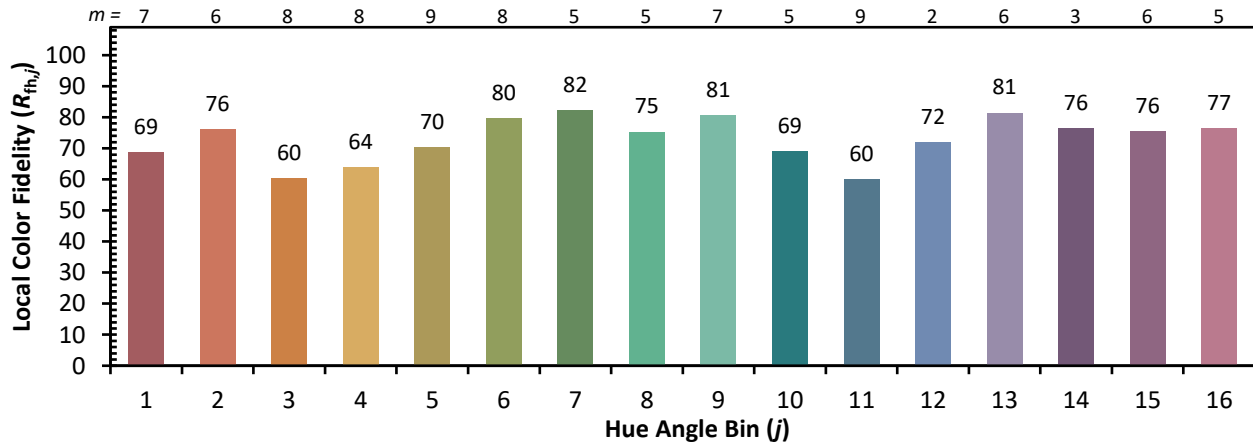
|            |            |            |            |
|------------|------------|------------|------------|
| CES01 = 85 | CES26 = 54 | CES51 = 88 | CES76 = 43 |
| CES02 = 59 | CES27 = 79 | CES52 = 90 | CES77 = 64 |
| CES03 = 30 | CES28 = 77 | CES53 = 77 | CES78 = 46 |
| CES04 = 69 | CES29 = 50 | CES54 = 81 | CES79 = 74 |
| CES05 = 46 | CES30 = 59 | CES55 = 80 | CES80 = 70 |
| CES06 = 50 | CES31 = 55 | CES56 = 70 | CES81 = 71 |
| CES07 = 38 | CES32 = 52 | CES57 = 68 | CES82 = 88 |
| CES08 = 38 | CES33 = 63 | CES58 = 70 | CES83 = 82 |
| CES09 = 29 | CES34 = 63 | CES59 = 88 | CES84 = 87 |
| CES10 = 72 | CES35 = 79 | CES60 = 92 | CES85 = 84 |
| CES11 = 55 | CES36 = 90 | CES61 = 88 | CES86 = 76 |
| CES12 = 61 | CES37 = 72 | CES62 = 81 | CES87 = 75 |
| CES13 = 41 | CES38 = 68 | CES63 = 75 | CES88 = 77 |
| CES14 = 74 | CES39 = 91 | CES64 = 72 | CES89 = 76 |
| CES15 = 70 | CES40 = 83 | CES65 = 65 | CES90 = 76 |
| CES16 = 46 | CES41 = 84 | CES66 = 66 | CES91 = 92 |
| CES17 = 48 | CES42 = 70 | CES67 = 64 | CES92 = 70 |
| CES18 = 55 | CES43 = 69 | CES68 = 71 | CES93 = 83 |
| CES19 = 70 | CES44 = 98 | CES69 = 80 | CES94 = 60 |
| CES20 = 64 | CES45 = 79 | CES70 = 58 | CES95 = 73 |
| CES21 = 85 | CES46 = 78 | CES71 = 55 | CES96 = 79 |
| CES22 = 77 | CES47 = 76 | CES72 = 84 | CES97 = 84 |
| CES23 = 91 | CES48 = 68 | CES73 = 47 | CES98 = 73 |
| CES24 = 90 | CES49 = 78 | CES74 = 94 | CES99 = 62 |
| CES25 = 71 | CES50 = 87 | CES75 = 51 |            |



REPORT NUMBER: SP1-1908-441-9-R4

TM-30-18

Color Rendition by Hue-Angle Bin



REPORT NUMBER: SP1-1908-441-9-R4

TM-30-18

Measure Comparisons



(END OF REPORT)